



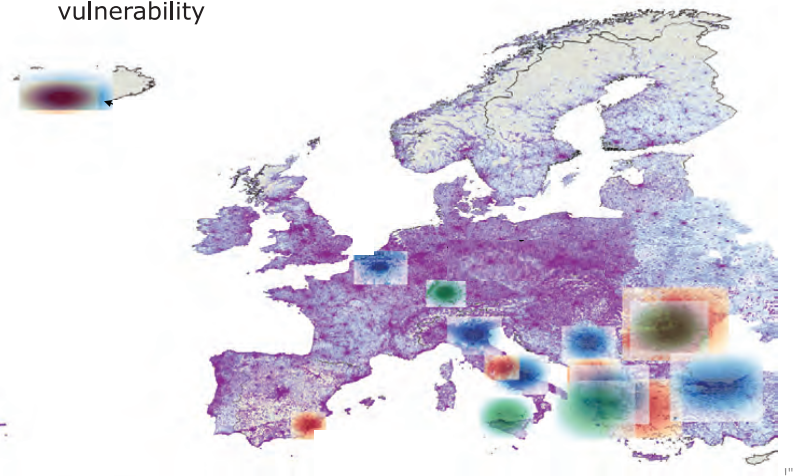
The latest
pan European
probabilistic
EQ model

for taking control of your risk

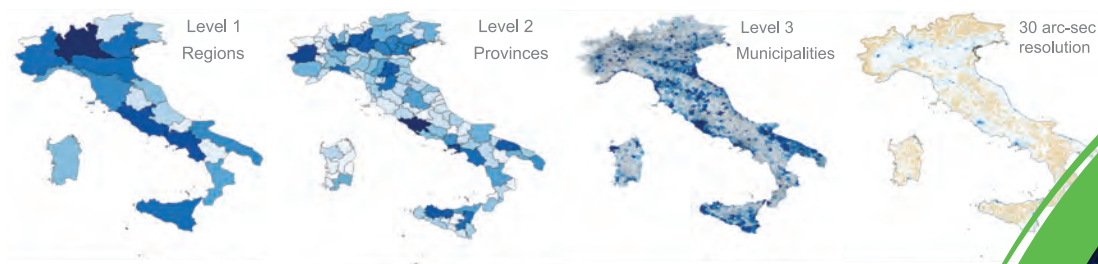
ERN and RED proudly present the first pan European Earthquake model based on the SHARE hazard model, a regional program of the Global Earthquake Model initiative (GEM)

The highlights of the new model are:

- Covering 44 countries without borders
- Cross-country PML calculation and accumulation control
- First model to implement complete SHARE hazard model also used in GEM
- Completely new Exposure database developed using interdisciplinary techniques
- Comprehensive treatment of all uncertainty sources in earthquake occurrence models, ground motion, and vulnerability



Exposure



Resolution in Google Earth® maps

- Very large stochastic catalogue with millions of simulated events that ensure stability of your loss estimates
- Detailed and extensively calibrated vulnerability functions, including buildings, industrial facilities, bridges, tunnels, roads, railroads, dams, airports, ports, non structural components, lifelines, among others.
- Very portable model availability on other platforms and on R-PLUS
- Detailed risk evaluation of contents of buildings based on specific vulnerability functions for the type of building occupancy

Developed by



RISK
ENGINEERING
+DESIGN

We live for risk assessment

Vito Alessio Robles 179
Col. Hacienda de Guadalupe Chimalistac,
C.P. 01050 Delegación Álvaro Obregón
Mexico City
+52 (55) 5616-8161, 62 & 64



www.ern.com.mx